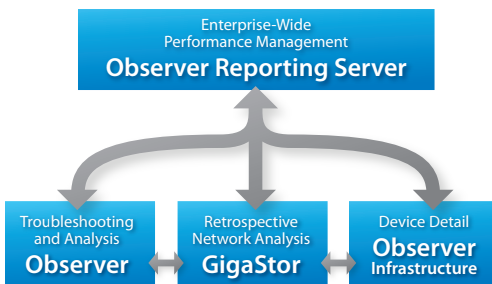


Highlights

- Assess impact of infrastructure performance on overall enterprise
- Obtain device and application health via monitoring technologies
- Actively discover, map, and monitor devices and topologies
- Track immediate and long-term performance changes

Observer Platform Profile

The combined Observer Platform provides seamless visibility into network, application, and device health for performance management.



OBSERVER INFRASTRUCTURE

Manage IT Infrastructure and Device Performance

Maintaining device and route performance is key to ensuring the delivery of critical applications. Observer® Infrastructure (OI) is a powerful network monitoring solution that provides the functionality and intelligence needed to ensure the network supports current and future business.

Service Availability

- Manage IP services and devices with intuitive graphs and displays
- Monitor long-term device performance trends

Monitoring Technologies

- Transform infrastructure metrics into actionable information
- Optimize performance in virtual and WAN environments

Performance Dashboards

- Correlate application delivery to underlying infrastructure performance
- Establish baselines and alarms for all performance and time-based metrics

MANAGE SERVICE HEALTH

Quickly identify which devices, routes, and IP services are up or down and how they're performing. OI automatically detects and reports on device health using flow technologies including SNMP, WMI, WSD, IP SLA, NBAR, and WAAS. Use synthetic transactions to regularly assess the health of critical services. All data is stored for long-term trending and analysis.

Joseph (10.0.38.21)	Web Server	-- -- -- -- --	0.179	✓	--	1	HTTP
Joseph-test (10.0.38.22)	Station	-- -- -- -- --	0.592	✓	--	--	--
JUSTIN-2 (10.0.38.99)	Web Server	-- -- -- -- --	0.690	✓	1	--	--
Justin-sp (10.0.38.80)	Web Server	-- -- -- -- --	2.384	✓	1	--	--
YOSHUA (10.0.36.22)	Station	-- -- -- -- --	0.627	✓	--	--	--
LEX2 (10.0.40.33)	Printer	?	NA	?	--	3	FTP, LDAP, SNMP
LEX4 (10.0.34.14)	Printer	✓ -- 14 -- -- 2	0.565	✓	3	--	--
LEXMK10.0.40.37 (10.0.40.37)	Printer	✓ -- 11 -- -- 5	0.513	✓	4	--	--
minint-rmshy (10.0.36.90)	Web Server	-- -- -- -- --	NA	?	--	1	HTTP
netinst-imsac.netinst.com (10.0.36.122)	Station	-- -- -- -- --	0.219	✓	--	--	--
NETWORK-CEPISG1 (10.0.38.63)	Station	-- -- -- -- --	NA	?	--	--	--
NETcat506 (10.0.32.1)	Switch	✓ -- 108 -- -- 2	0.264	✓	2	--	--
microwan (10.0.38.156)	Wireless Access Point	✓ -- 40 -- -- 2	0.467	✓	3	--	--

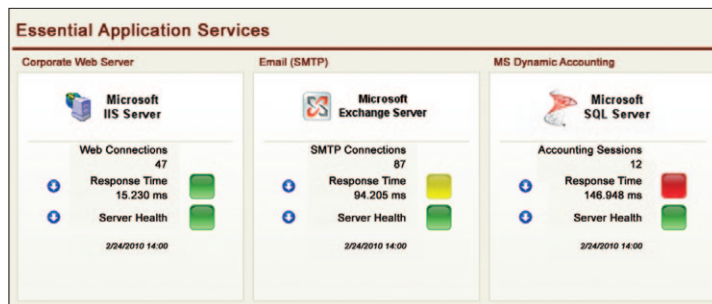
MONITOR MULTIPLE PERSPECTIVES

Leverage the power of performance monitoring technologies to obtain network-wide views of device and application performance from multiple data perspectives.

- Gather key metrics on Active Directory Servers, Host Resources, IIS Servers, printers, routers, SQL servers, and switch utilization by SNMP and WMI
- Track performance data from virtual and WAAS devices via WSD
- Obtain network-wide views of application and service delivery and performance with NBAR and IP SLA stored for long-term trending and analysis.

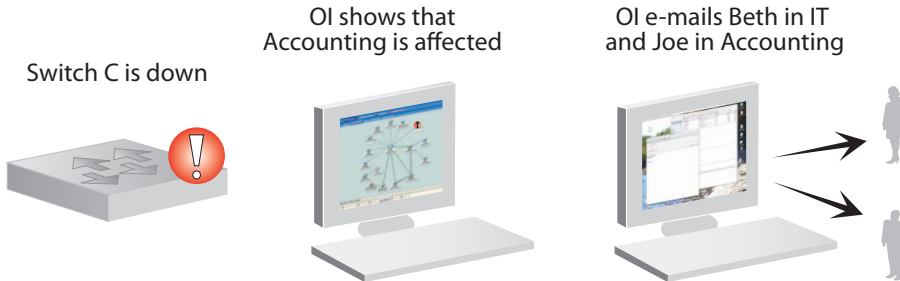
VIEW COMPLETE PERFORMANCE

Seamlessly integrate OI into Observer Reporting Server (ORS) for a complete and aggregated view of performance. Track and correlate infrastructure health side-by-side with network and application views. Use baseline metrics and alarms to proactively manage degrading performance.



LINK INFRASTRUCTURE TO BUSINESS

Create business groups to track the impact of devices and resources on business services and processes. Organize network devices into specific subsets based on geography, department, device type, application service, or any other basis. Combined with alarms, the business groups allow instant visibility into the area of the business needing attention.

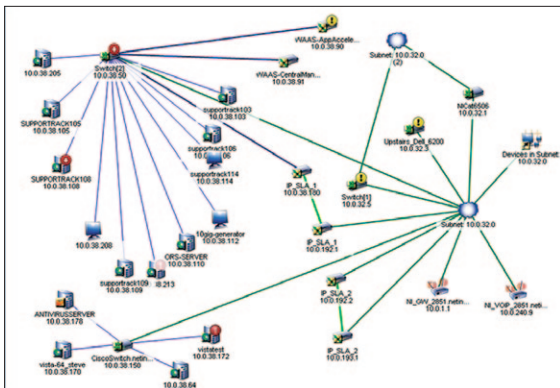


Business Groups

- Prioritize problems based on severity and business impact
- Drill within groups for easy sub-level analysis

CREATE DEVICE AND ROUTE MAPS

OI active discovery generates a map of any segment, or group of systems, on the network. The intuitive interface provides a real-time, continuous visual grade of response times and health on all network assets and routes. Continually measure route performance and be alerted to changes and delays. Document route flapping to ensure service delivery and enforce SLAs.



Device and Route Status

- Map local and remote networks of any size
- Monitor route maps and be alerted to changes and delay

RECEIVE INSTANT ALARMS

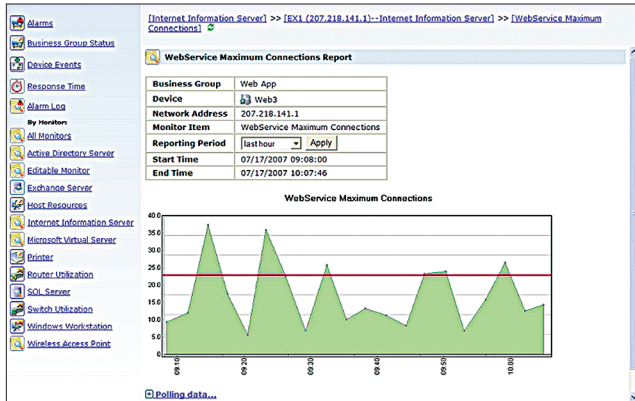
OI's alarms are highly customizable. Set alarms and adjust thresholds to alert you instantly to problems or changes in critical devices and routes. Immediately drill down for device details and problem resolution.

Event Notification

- Proactively manage degrading performance via alarms
- Graph and compare alarm data over time

MONITOR TRENDS AND CHANGES

Customize, view, expand, and compare reports for in-depth analysis on routes, devices, and groups. Easily view and share data via secure web reports. Run inventories and monitor changes in items such as removable hard drives or installed software on devices.

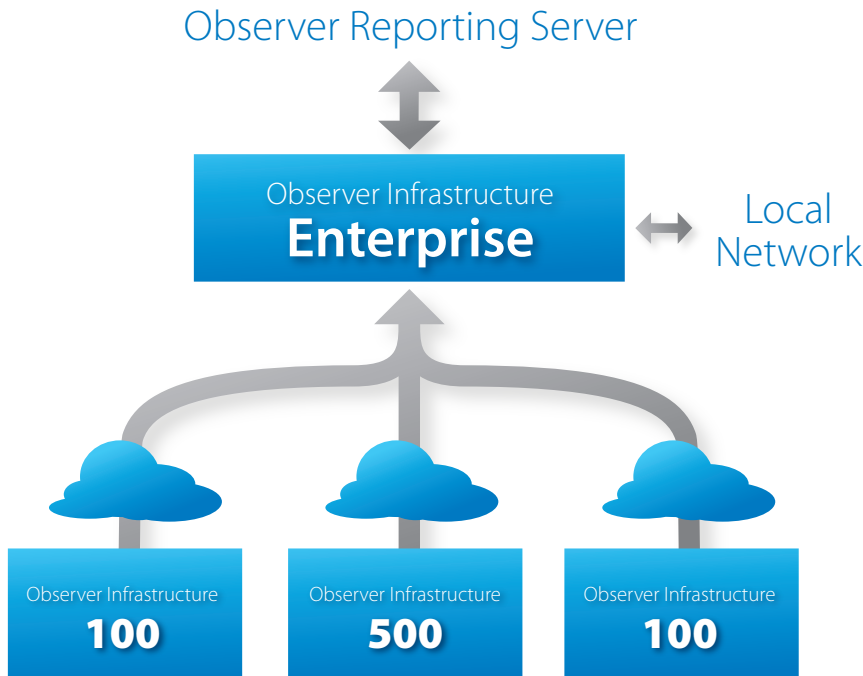


Dynamic Reporting

- Share reports on alarms, business groups, device events, response time, and inventory
- Run weekly inventory snapshots and compare changes

DEPLOYMENT OPTIONS

The OI Enterprise connects to ORS to provide a complete view of global performance that includes infrastructure health. In distributed or multiple branch office environments, deploy OI 100 or 500 as a collection device for the remote sites to send information to OI Enterprise. OI can also be deployed as standalone software or appliance to monitor 100 or 500 devices.



About Network Instruments®

Network Instruments, a leading provider of performance management and troubleshooting for over sixteen years, helps organizations ensure the delivery of business-critical applications. The company's platform of management and reporting products provides comprehensive visibility into networks and applications to optimize performance, speed troubleshooting, and assist long-term capacity planning.

Headquartered in Minneapolis, the company has sales offices worldwide and distributors in over 50 countries.

Corporate Headquarters: 800-526-7919
Europe: + 44 (0) 1959 569880

